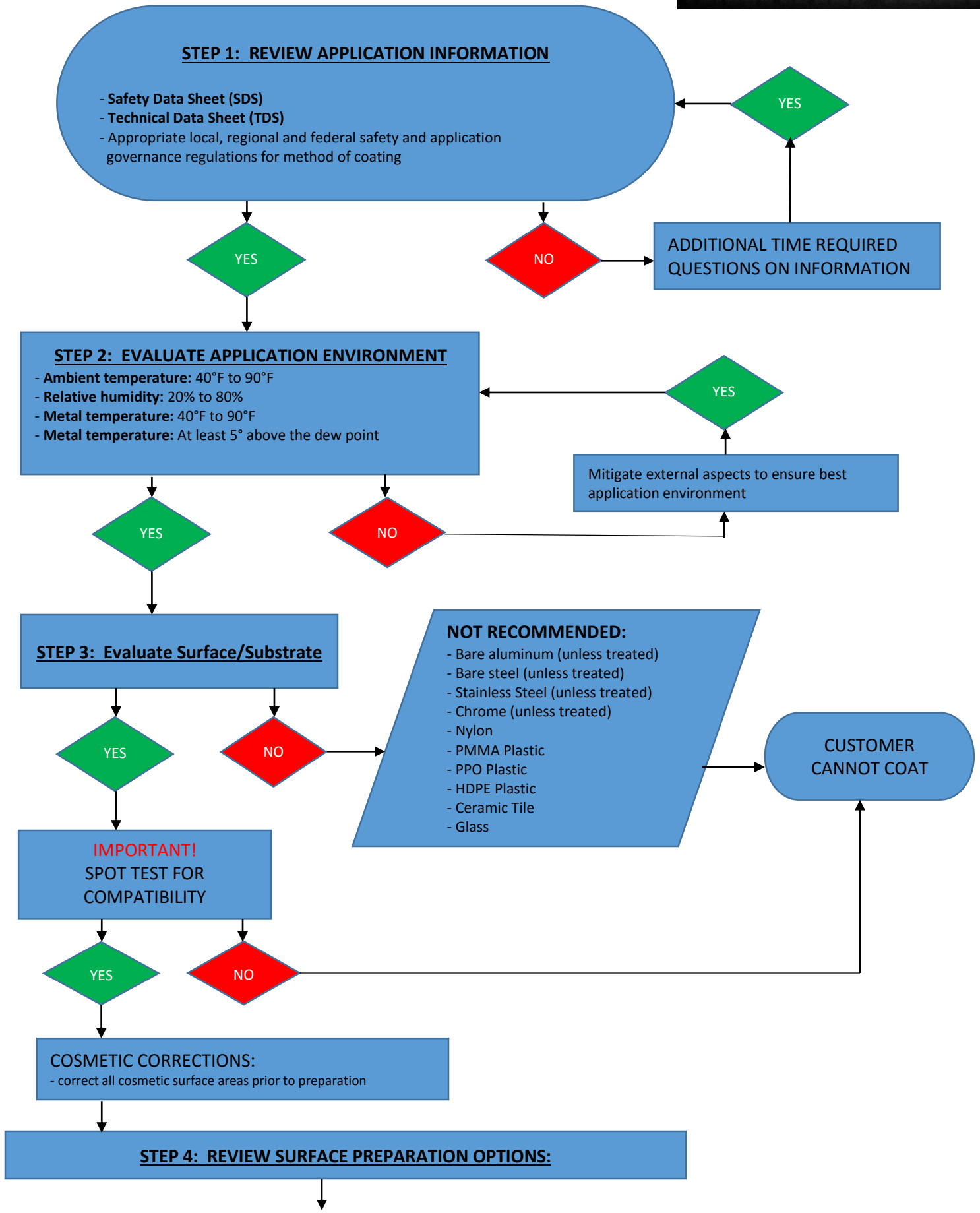


# NANO-CLEAR® APPLICATION INSTRUCTIONS



## STEP 1: REVIEW APPLICATION INFORMATION

- Safety Data Sheet (SDS)
- Technical Data Sheet (TDS)
- Appropriate local, regional and federal safety and application governance regulations for method of coating

YES

NO

YES

ADDITIONAL TIME REQUIRED  
QUESTIONS ON INFORMATION

## STEP 2: EVALUATE APPLICATION ENVIRONMENT

- Ambient temperature: 40°F to 90°F
- Relative humidity: 20% to 80%
- Metal temperature: 40°F to 90°F
- Metal temperature: At least 5° above the dew point

YES

NO

YES

Mitigate external aspects to ensure best  
application environment

## STEP 3: Evaluate Surface/Substrate

YES

NO

### NOT RECOMMENDED:

- Bare aluminum (unless treated)
- Bare steel (unless treated)
- Stainless Steel (unless treated)
- Chrome (unless treated)
- Nylon
- PMMA Plastic
- PPO Plastic
- HDPE Plastic
- Ceramic Tile
- Glass

CUSTOMER  
CANNOT COAT

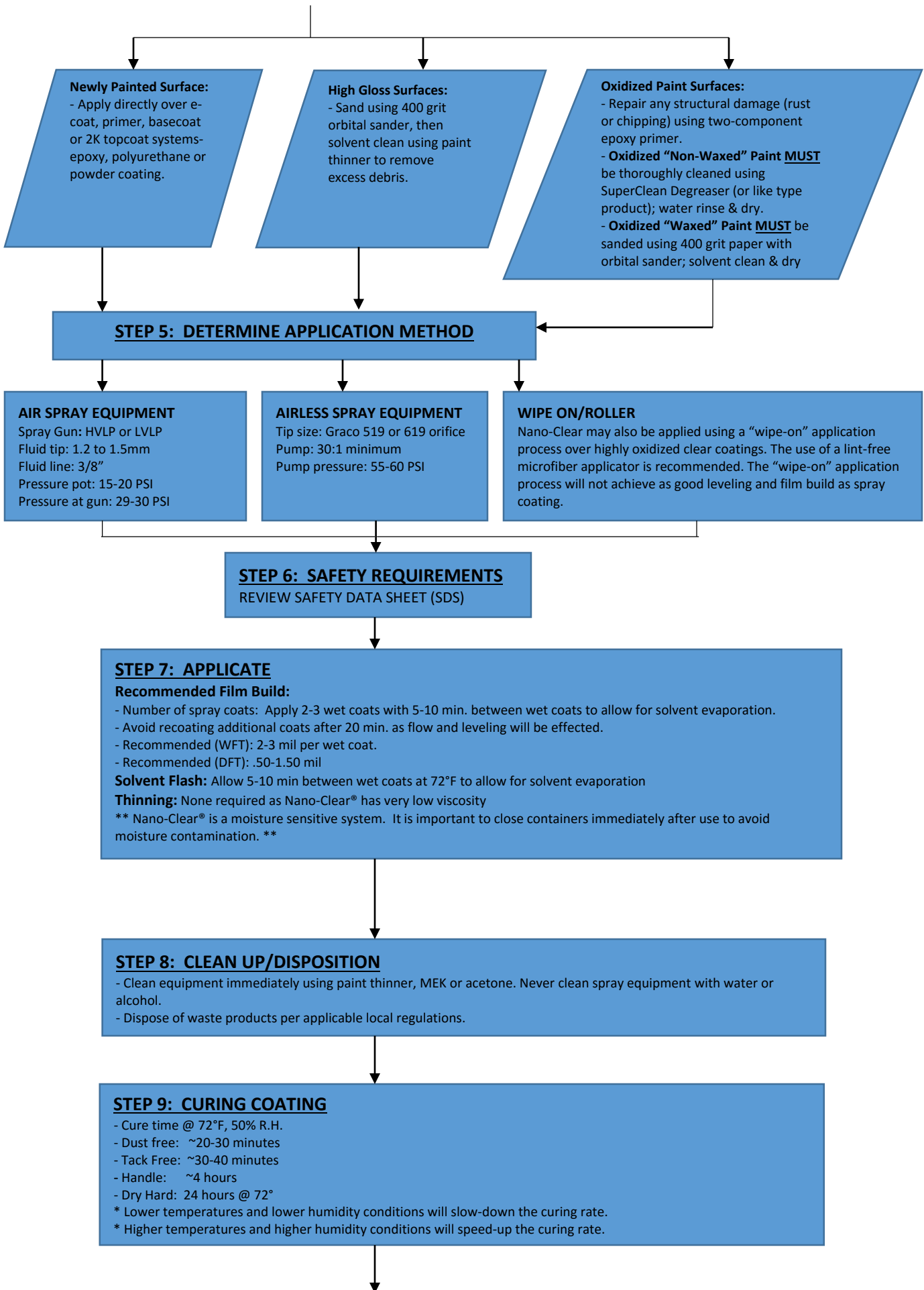
**IMPORTANT!**  
SPOT TEST FOR  
COMPATIBILITY

YES

NO

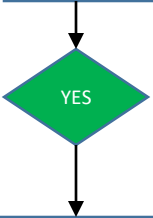
COSMETIC CORRECTIONS:  
- correct all cosmetic surface areas prior to preparation

## STEP 4: REVIEW SURFACE PREPARATION OPTIONS:



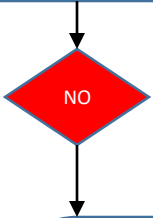
↓

**STEP 10: APPLIED PRODUCT REVIEW**  
REQUIRES CORRECTIONS?



**BUFFING & POLISHING (if needed):**

- **Equipment:** orbital sander and orbital polishing equipment.
- **Sandpaper:** 1000 grit paper, then 1500, then 2000 to 2500 grit paper.
- **Compound:** Heavy cut compound with wool pad @ 1200 to 1400 RPM.
- **Polishing:** 3M SRC (scratch resistant clears) polishing paste with wool @ 1200 to 1400 RPM.
- **Final Polish:** use light to medium cut polishing paste with wool pad @ 1200 to 1400 RPM.



**COATING MAINTENANCE:**  
SURFACE MAINTENANCE/CLEANING

- use low pH soap and water for clean-up.
- use lint-free microfiber cloths to clean and dry surface
- use paint-thinner to remove graffiti.

